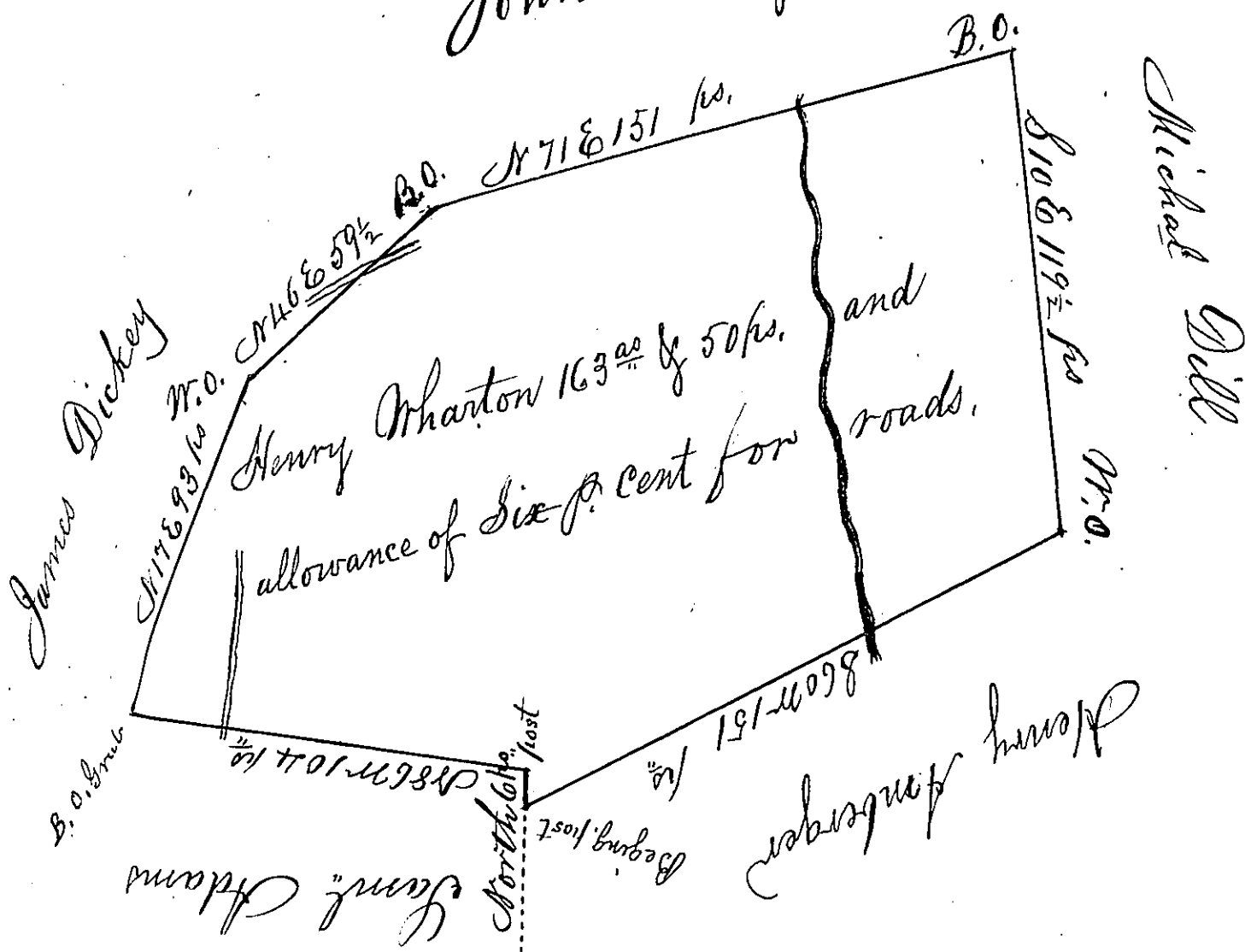


John Wiley



A Draught of a Tract of land situate in East Pennsborrow Township in Cumberland County containing one hundred and sixty three acres and fifty perches and the usual allowance of Six p. cent for roads, Surveyed for Henry Wharton the 25th day of May 1774 in pursuance of the Honorable the Proprietaries Warrant bearing date the eighteenth day of October Anno Domini 1752.

To John Lukens Esqr,
Surveyor General

John Armstrong
D: S:

IN TESTIMONY that the above is a copy of the original remaining on file in the Department of Internal Affairs of Pennsylvania, made conformably to an Act of Assembly approved the 16th day of February, 1833, I have hereunto set my Hand and caused the Seal of said Department to be affixed at Harrisburg, this

Sixteenth day of January 1834,

J. Simpson Africa,
Secretary of Internal Affairs